

Annual Report 2005



Executive Director Joe Tempel
Presenting the Executive Track
To
Matt Carey
Upon his leaving the Friends of Dinosaur Ridge
After four years of dedicated service as
Program/Operations Director

**Friends of Dinosaur Ridge
16831 West Alameda Parkway
Morrison, Colorado 80465**

**Tel: 303-697-DINO
www.dinoridge.org**

**Editor: Ed Warren
Design and Production: Ed Warren**

The Friends of Dinosaur Ridge (FODR) a 501 C3 non-profit tax exempt organization, was established to protect the natural resources on Dinosaur Ridge and Triceratops Trail, and to educate visitors about the area's geologic, prehistoric and natural features.

Major Contributors

- ❖ Gates Family Foundation
- ❖ Coors Foundation
- ❖ Great Outdoors Colorado
- ❖ Jeffco Conservation Trust Funds
- ❖ Scientific & Cultural Facilities District (SCFD)
- ❖ Jefferson County Open Space



**Scientific & Cultural
Facilities District**

Making It Possible.

Friends of Dinosaur Ridge 2005

Officers

President	Chris Carroll	CO Geological Survey
Vice-President	Sam Bartlett	Bureau of Recl. Retired
Secretary	Bob Raynolds	Consulting Geologist
Treasurer	Keith Meakins	Accountant

Executive Committee Members

Norb Cygan	Geologist
Duff Kerr	Kerr & Associates
Kathleen McCoy	Lawyer
Pete Martin	U. S. Bureau of Reclamation
Betty Rall	Geologist
Ed Warren	Geological Engineer

Board of Directors

Sam Bartlett	Bureau of Reclamation, Ret.
Tim Connors	National Park Service
Harald Drewes	Geologist
DuWayne Ebertowski	Fed. Hwy Admin., Ret.
Dan Green	Consulting Electrical Engineer
Jan Jacobs	Technical Editor
John Kelly	Geologist
Susan Landon	Thomasson Partner Associates
Martin Lockley	University of Colorado, Denver
Marge MacLachlan	Geologist
Pete Modreski	United States Geological Survey
Beth Simmons	Metro State College
Jeff Stephenson	Denver Museum of Nature and Science

Executive Director	Joe Tempel
Program Director	Matt Carey
Store Manager	Roger Bennett

The President's Report for 2005

By Chris Carroll

As the president of the Friends of Dinosaur Ridge, I wish to congratulate all the Friends for having a most successful year in 2005. The year 2005 was the best in the Friends' sixteen-year history in terms of revenue, grants, involvement with the public, cooperation with local governments, and the number of visitors.

The organization has grown from its humble beginnings in 1989 as a small part of the Morrison Museum into a full-fledged 501 c(3) organization with several employees, buildings, infrastructure, and many volunteers.

Over 48,000 visitors came to the Visitor Center in 2005, and over 100,000 people visited Dinosaur Ridge, and the Ridge.

Leadership from **Executive Director Joe Tempel** has been exceedingly awesome. **Joe's** new philosophy has been, "If they turned us down for a grant in 2004, then they must want us to ask for twice as much in 2005". **Joe Tempel** appropriated grants in excess of \$200,000 last year alone! He took on a \$250,000 barn renovation and education center building project, and within eight months raised 87 percent of the funds. The Friends will break ground for this building in the spring of 2006.

Joe has been a tireless representative of the good people who work for Dinosaur Ridge to make it what it is today. We wouldn't be anywhere without him so thanks from all of us.

At "**Rock Out for the Ridge**" in November, **Holly Tempel** and **Gay Page** assisted the Friends this year. They coordinated an excellent silent auction, dinner, music, and party at the **Red Rocks Visitors Center**. FODR raised over \$10,000 for that one event. Thanks **Holly** and **Gay**, your leadership and hard work are noted highly.

On the Education Team we have transition. **Erin Fair** has taken on full-time responsibilities with tours and education, and she has been an excellent contributor. Our Education Director **Matt Carey** completed a whirlwind year with tours and new brochures for educational opportunities and membership. At the same time he re-vamped and updated our interactive website and **Matt** even had time to get married. **Matt** left us for better prospects in the computer world in January 2006.

Thank you, **Matt**, for all your hard work over the years. We are indebted to you for your persistence in making the first **Program Director's** tasks into an excellent program. Right on his heels, we hired **Tom Moglestad** to take over the Program-Operations Director job. Welcome **Tom**, may 2006 be a successful year for you.

To all of the Board of Directors I say thank you for your leadership and guidance in 2005. We were able to financially achieve great success in all of our activities. I am proud to say that we are in the black! Our

new membership goals and construction projects will give this organization a new look in 2006. To **Susan Landon**, one of our Board Members who was injured in a skiing accident, we say "Get Well Soon"! We hope your recovery from such a trauma is much improved in 2006, and we are glad to know that you are doing better.

The Friends of Dinosaur Ridge are currently soliciting contributions from the private sector in terms of corporate donations. The Board of Directors fundraising committee is actively seeking endorsements and funding from private corporations in the Front Range Region with ties to Dinosaur Ridge. These include local companies in the petroleum, banking, entertainment, and transportation industries, to name a few. Corporate donations will be accepted in 2006 in order to offset costs for our new "**Ancient Environmental Education Center**" in the barn behind the Visitor Center.

The barn renovation will include interactive exhibits and displays of Cretaceous and Jurassic environments that existed along Dinosaur Ridge over 100 million years ago. We have contracted **Clare Marshall** to oversee design of the displays in the exhibit. FODR is seeking contributions in the order of \$5,000 to cover costs of the exhibit. Donors will receive commemoration with a permanent track cast in their honor along the large trackway to be displayed outside of the front of the building.

I would like to thank a few of the sponsors and grant supporters from the following groups for their contributions to Dinosaur Ridge in 2005:

- Scientific & Cultural Facilities District (SCFD)
- Greater Denver Area Gem & Mineral Council
- Coors Foundation
- Jefferson County Conservation Trust Fund (Allosaurus entry sign)
- Great Outdoors Colorado
- Rocky Mountain Association of Geologists
- Bandimere Speedway
- Homebuilders Association of Metro Denver
- The Fort Restaurant
- Andrews & Anderson Architects, P.C.
- Girl Scouts - Mile Hi Council
- Association for Women Geoscientists
- Stevinson Denver West Village
- The Town of Morrison
- The Morrison Natural History Museum

Special thanks go out to the volunteers at Dinosaur Ridge that make our tours and Dinosaur Discovery Days so successful, and of course, to all the kids and parents who come out to Dinosaur Ridge. We say thank you because without you, there would be no Dinosaur Ridge.

Executive Director's Report By Joe Tempel

The following projects were completed in 2005:

- **Shade structure and plastic cover over the *Allosaurus* bones at the Visitor Center.**

This project cost \$2,000 and funds were received from SCFD and the Greater Denver Area Gem and Mineral Council. The shade structure was constructed by **Eagle Scout Trevor Mark** and the Plexiglas cover was fabricated by **Alpha Sign**. These bones will slowly be revealed to the public over the next two years during DD Days. They have been incorporated into our educational programs at Dinosaur Ridge.

- ***Allosaurus* Entry Sign at the Visitor Center.**

This entry sign cost \$20,500 and funds were received from the **Jefferson County Conservation Trust Fund**, SCFD, and **Karen Bond**. The railroad tie retaining wall was constructed by **Eagle Scout Chris Tshudy** and the ties were donated by the **Denver Mountain Parks**. Not only is this sign visible during the day, but it is also lighted at night.

- **New driveway to parking lot on the north end of the Visitor Center.**

Rooney Ranch Inc. donated an easement to Jefferson County so the Friends could extend our driveway to the north without impacting our Dig Pit. Recycled asphalt was contributed by the **City of Lakewood** and graded by **Eagle Scout Taylor Kaufman**. After the barn is renovated, the driveway and parking lot will be paved with fresh asphalt.

- **Gravel walk on west side of driveway at Visitor Center.**

Eagle Scout Carson Snart, completed this project utilizing crusher fines donated by **Lafarge Company**. This will provide a safe place to walk for visitors wishing to walk from the Visitor Center to the Ridge.

- **Directional signs to Dinosaur Ridge.**

Directional signs were installed at the following four locations which have helped visitors find the Ridge more easily: Rooney Road/Alameda, Morrison Road/Rooney Road, Rooney Road/Bandimere, County Road 93/entrance to Red Rocks.

- **Deck in the Hadrosaur Pit at Fossil Trace.**

This deck was constructed by **Eagle Scout Sam Cornellisson**, utilizing recycled plastic decking donated by the **Deck Company**. This deck keeps visitors out of a puddle of water after a rain that collects in the pit.

- **Parking Lot and Directional Signs for *Triceratops* Trail.**

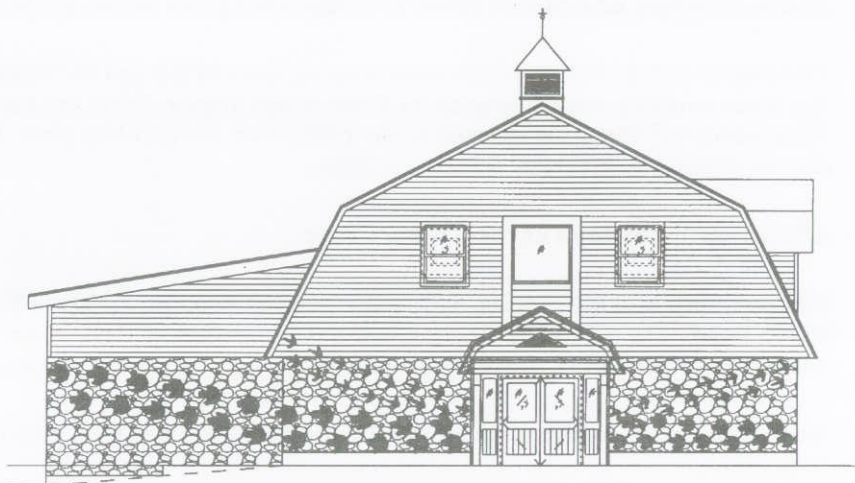
The Friends finally secured permanent parking for eight vehicles for people visiting ***Triceratops* Trail**. **Chip Parfet** graded the site, removed two trees and spread recycled asphalt over a site that is located along the 6th Avenue bicycle path. He did this work at no cost to Dinosaur Ridge. Two directional signs were installed on 19th Street by the **City of Golden** and the Friends installed three other signs on **Chip Parfet's** property to direct people to the parking lot. According to our geocache records (a geocache is located along the ***Triceratops* Trail**), visitation has increased significantly since the parking and directional signs have been installed.

Status of Ancient Environmental Education Center:

The plans for the renovation of the barn have been completed. Approximately \$215,000 has been raised for a project totaling \$246,000. The Friends will be breaking ground this spring. The lower level of the barn will house interactive exhibits and the upper level will be used for offices, boardroom, classroom and fireside-chat room. This will be a major addition to our Visitor Center at Dinosaur Ridge.

Lariat Loop Scenic Byway:

Interpretive kiosks were installed in Morrison and the Beverly Heights Park in Golden. An interpretive sign at the Morrison kiosk discusses dinosaurs on **Dinosaur Ridge**. An interpretive sign at the Beverly Heights kiosk will discuss **Triceratops Trail** at **Fossil Trace**. Funds are being raised for a large (60' x 15') mural in Morrison depicting prehistoric (dinosaurs) and historic figures.



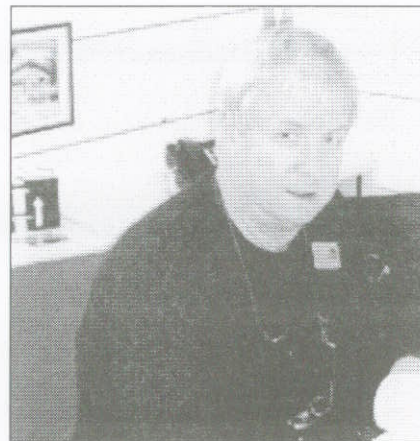
Front Elevation of the
Ancient Environmental Education Center

Good luck to Matt Carey!

Matt Carey has been our *Education/Operations Director* since the fall of 2001. We are grateful for all the great work he has done for the Friends of Dinosaur Ridge over the past four-plus years. It will be difficult to replace him because of his many talents. We wish him well in his next job with a computer company in Boulder. **Matt** met his future wife, **Angie**, on a Dinosaur Ridge school tour he conducted a couple years ago. We wish them both our best.

Welcome Tom Moglestad!

Tom Moglestad replaces **Matt Carey** as *Program/Operations Director*. He received a *Bachelor of Arts Degree in Chemistry* from *Carleton College* and a *Master of Science Degree in Geology* from the *University of Oregon*. Tom previously worked for various oil companies before starting his own business. After selling his business, he volunteered at the *Denver Museum of Nature and Science*, worked for Dinosaur Ridge in the gift shop and led tours. He currently is teaching a course in physical geology at *Arapahoe Community College*. We welcome **Tom** and look forward to making use of his many talents.



Tom Moglestad

Program Director's Report

By Tom Moglestad

Visitation at Dinosaur Ridge and attendance at educational programs provided by the Friends of Dinosaur Ridge in 2005 are as follows:

<u>Venue or Program</u>	<u># of Visitors or Attendees</u>	<u>Compared to 2004</u>
FODR Visitor Center	48,000	+4%
FODR Guided Tours	5,800	-8%
Dinosaur Discovery Days	2,700	+51%
Other Educational Programs*	500	-6%
Total	57,000	+4%

- ❖ **"Other Educational Programs"** includes Summer Weekend Bus Tours (21), Fireside Chats (5), and Open Houses at Triceratops Trail at Parfet Prehistoric Preserve (2) listed in the order of decreasing attendance. The 51% increase above resulted primarily from three Dinosaur Discovery Days (DDD). The July and August events drew a total of 1200 people in part because of the efforts of *"voluntaire extraordinaire"* **Duane Ebertowski**. Duane somehow arranged for short news stories on local TV on the Friday nights before each of these events. Thanks, Duane!
- ❖ **The Association of Women Geoscientists (AWG)** sponsored the October DDD. **Clare Marshall**, AWG president at the time, arranged an excellent program and coordinated with the Girl Scouts, resulting in 1000 attendees. This was the largest function staged by the Friends since the initial open house at *Triceratops* Trail three years ago. It was the largest event on the Ridge since the legendary days of *Jurassic Park*, the movie. Thanks, **Clare!**

Clare is attempting to match last years feat with special programs at the upcoming May 6 and October 7 DDD's. For these two events, in addition to our usual cadre of guides at the stops on the Ridge, we need volunteers for setting up, directing traffic and parking, manning three FODR booths, assisting the cashiers in the Gift Shop, patrolling the grounds of the Visitor Center and the Ridge, dismantling, and cleanup. Please consider giving us a hand.

In 2005 FODR once again had the opportunity to provide tours to groups from schools in low income areas. **WIN-WIN** made it possible for 514 students to attend FODR tours and the **Turner Fund** sponsored 332 students including part of their transportation.

New Educational Opportunities and Materials

Although near completion in late 2004, two interpretive signs designed by **Matt Carey** were completed and installed at Backyard Bones (the Dig Pit at the Visitor Center). Again, thanks to **Holly Tempel**, the **Denver Area Gem & Mineral Council**, and **Sam's Club** for their generous contributions. Subsequently, **Erin Fair**, Education Programs Assistant, developed *Backyard Bones, Cretaceous Crime Scene*, a 45 minute to 1-hour program for pre-K through 3rd grade that addresses the content standards of the State of Colorado. **Erin** held a training session attended by six guides and by years' end, approximately 300 budding paleontologists, 15 or so at a time, had participated in the program, informally referred to as the **"Dig Pit Tour."**

Summer Weekend Bus Tours, a new program in 2005, offered regularly scheduled Vanasaurs rides with a guided tour of the Mangrove Swamp, Track Site, Brontosaurus Bulges, and Dinosaur Bone Quarry. At 11:00 a.m. and 1:00 p.m. Saturdays and 1:00 p.m. Sundays, walk up visitors were invited to take the tour. This is the only current program attended primarily by tourists. Presently the **Education Committee** is looking at other potential offerings for those from afar, including a **Junior Ranger Program** similar to those of the National Parks.

A new interpretive sign was installed on the east side of the ridge near the top. Dubbed *"Coal and Clay Mining,"* it overlooks the sites of abandoned mines of the Rooney Valley. Again, thanks to the **Greater Denver Area Gem & Mineral Council** for funding the sign, **Al Rooney** for the historic photographs of the *Blue Bird Coal Mine*, and FODR president, **Chris Carroll**, who researched and mapped the locations of the mines.

Dinosaurs in Our Backyard, our new interactive CD-ROM, was finalized in early 2005 and installed on a touch-screen computer kiosk in the **Gift Shop**. For gift shop manager, **Roger Bennett**, the kiosk has been a welcome addition to the store. A second kiosk is being considered for the future exhibit hall in the barn. The CD-ROM was made with contributions from the **Greater Denver Area Gem & Mineral Council**, the **Rocky Mountain Association of Geologists (RMAG)**, **Denver Foundation**, **Scientific & Cultural Facilities District (SCFD)**, and the **Denver Museum of Nature and Science**. **Altitude Media** created a program that visitors enjoy very much. Last fall the RMAG distributed 600 copies of the CD-ROM to metro area schools.